

Example of Adaptive Change Detection

Robert B. Fisher
 School of Informatics
 University of Edinburgh

TEST SCENE

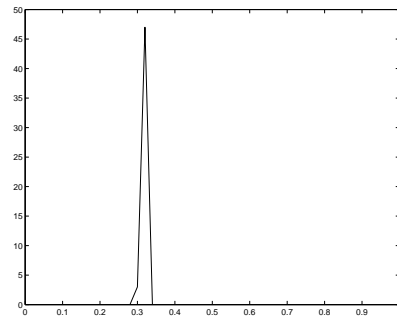
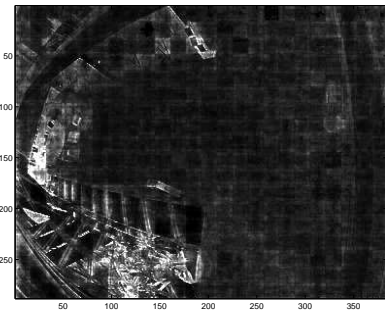
BACKGROUND IMAGE TYPICAL IMAGE



DISTRIBUTION RESULTS

σ

50 SAMPLES X_i AT
 PIXEL (100,100)



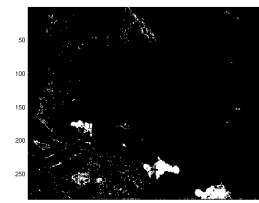
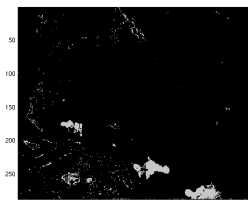
BACKGROUND

TYPICAL IMAGE



PROBABILITY

THRESHOLDED



NOISY DETECTION VIDEO

SEE: `homepages.inf.ed.ac.uk/rbf/...`
`...AVINVERTED/DEMOS/TRACK/demo2.html`

Lots of noisy pixels around

What We Have Learned

1. Target detected, but noise can be a problem
2. Compression artifacts